

第一次实验作业

实验目标

- 安装Linux操作系统
- 熟悉Linux操作系统的常用命令
- 学习使用bash
- 学习使用git
- 熟悉GitHub的使用流程

常见的Linux发行版

Linux发行版预览



GNOME Shell

Activities

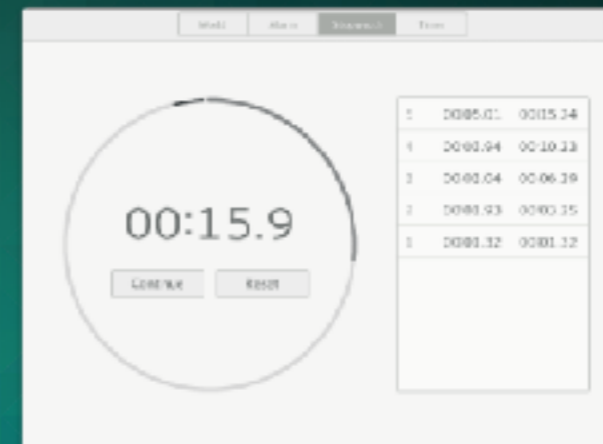
Wed 16:20



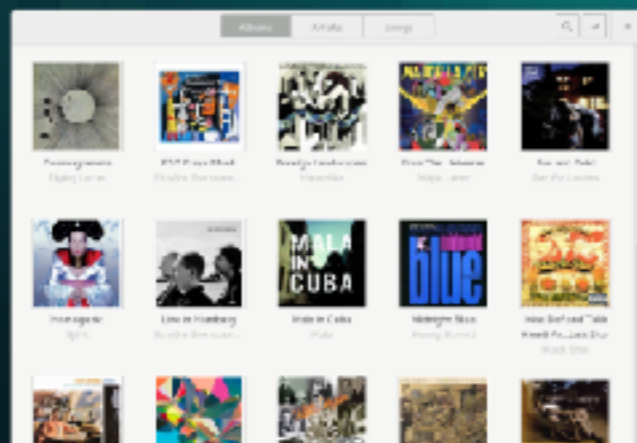
Type to search...



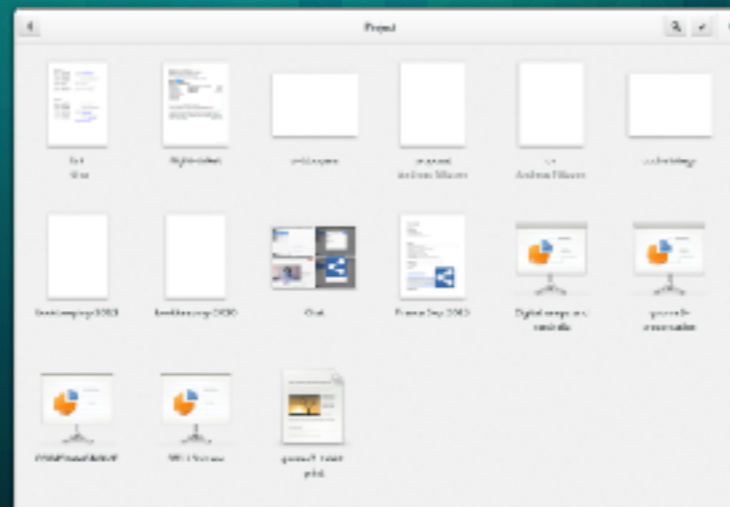
GNU 30th anniversary - GNU Project - Free Software Foundation



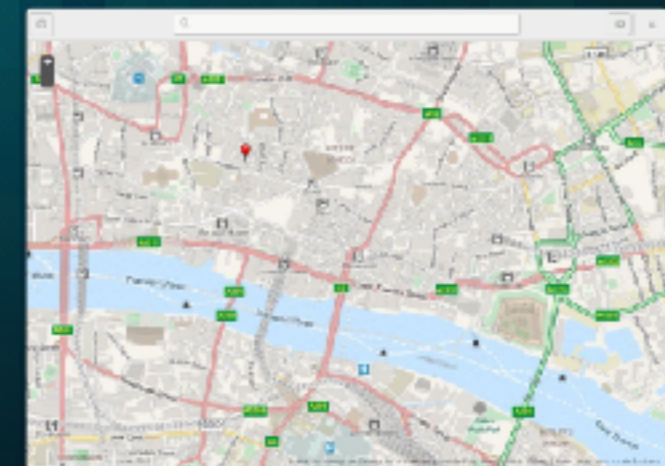
Clocks



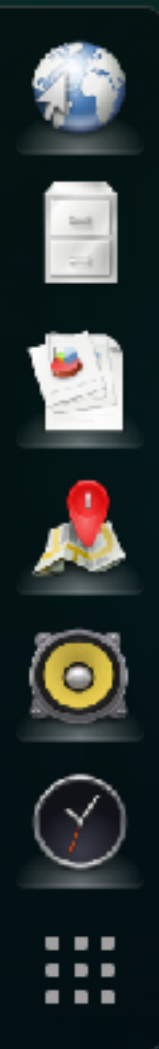
Music



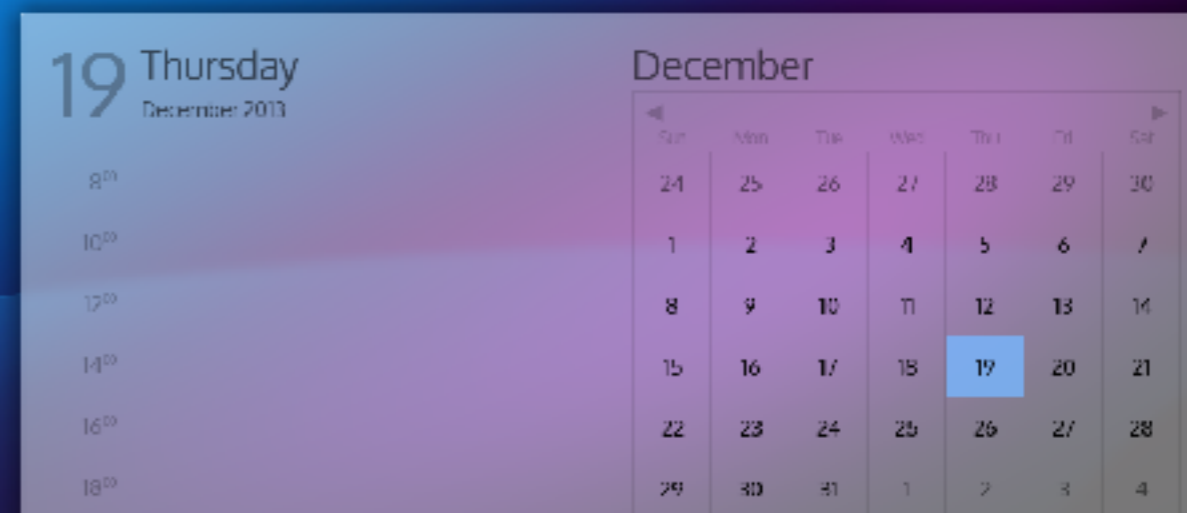
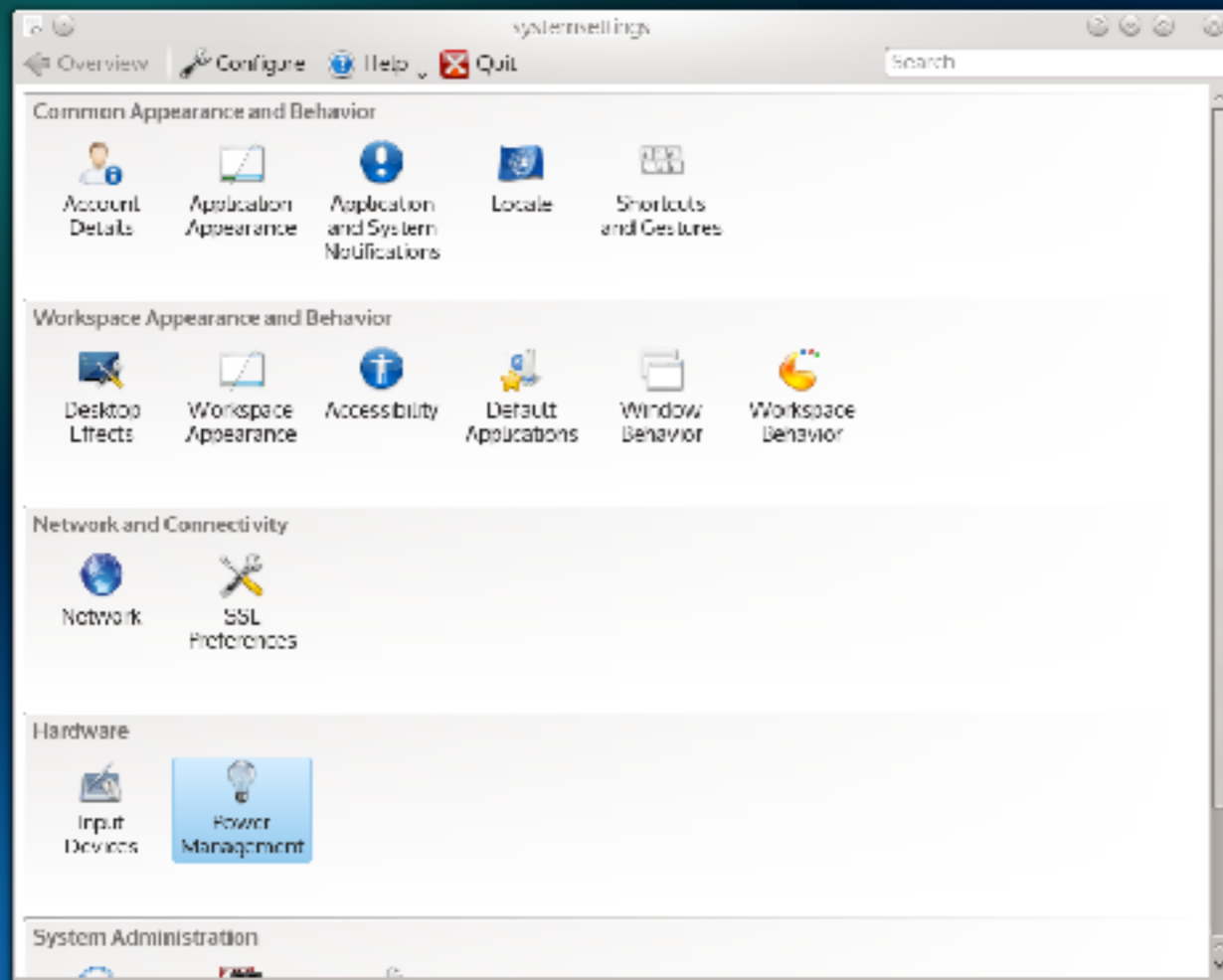
Documents



Maps



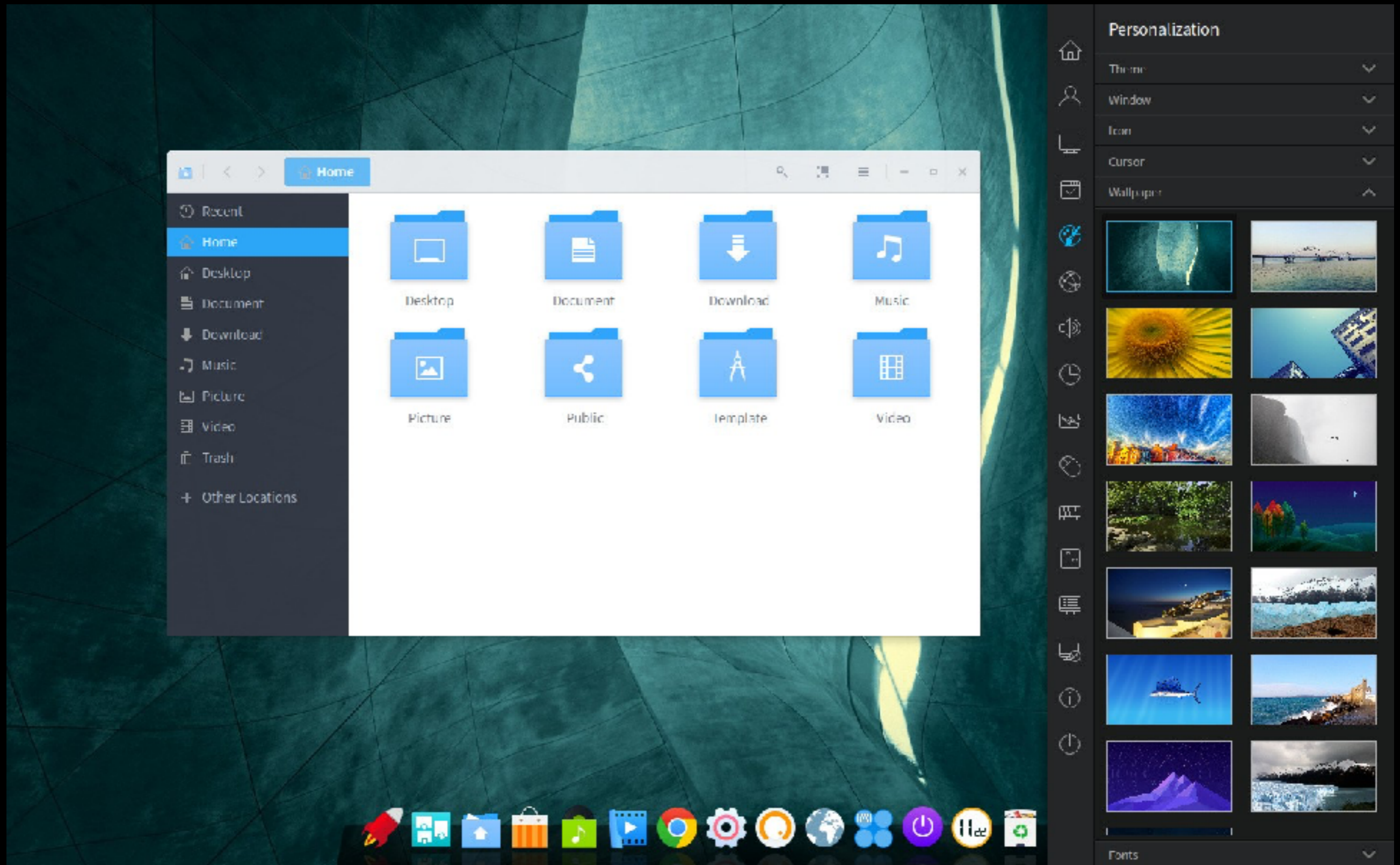
KDE Plasma



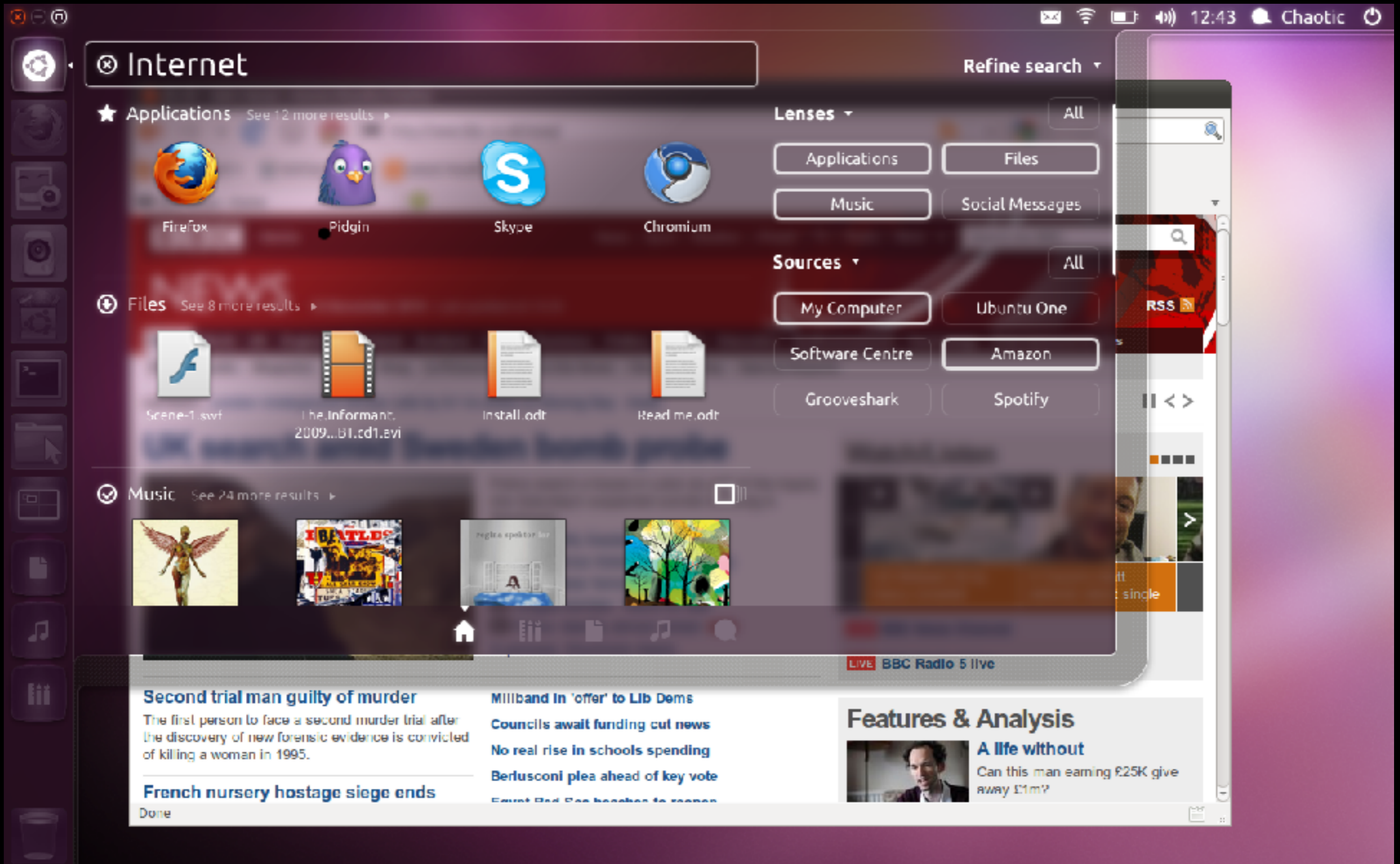
Elementary OS



Deepin Linux



Unity



常用命令

Linux命令大全

- 文件/目录相关：ls, cd, pwd, mv, cp, rm, mkdir, cat, touch, find, tar
- 文本处理：echo, grep, sed, wc, tee, sort, vi
- 操作系统相关：shutdown, reboot, w, ps, kill, df

shell程序

```
#!/bin/sh
cd ~
mkdir shell_tut
cd shell_tut

for ((i=0; i<10; i++)); do
    touch test_$i.txt
done
```

脚本解释器

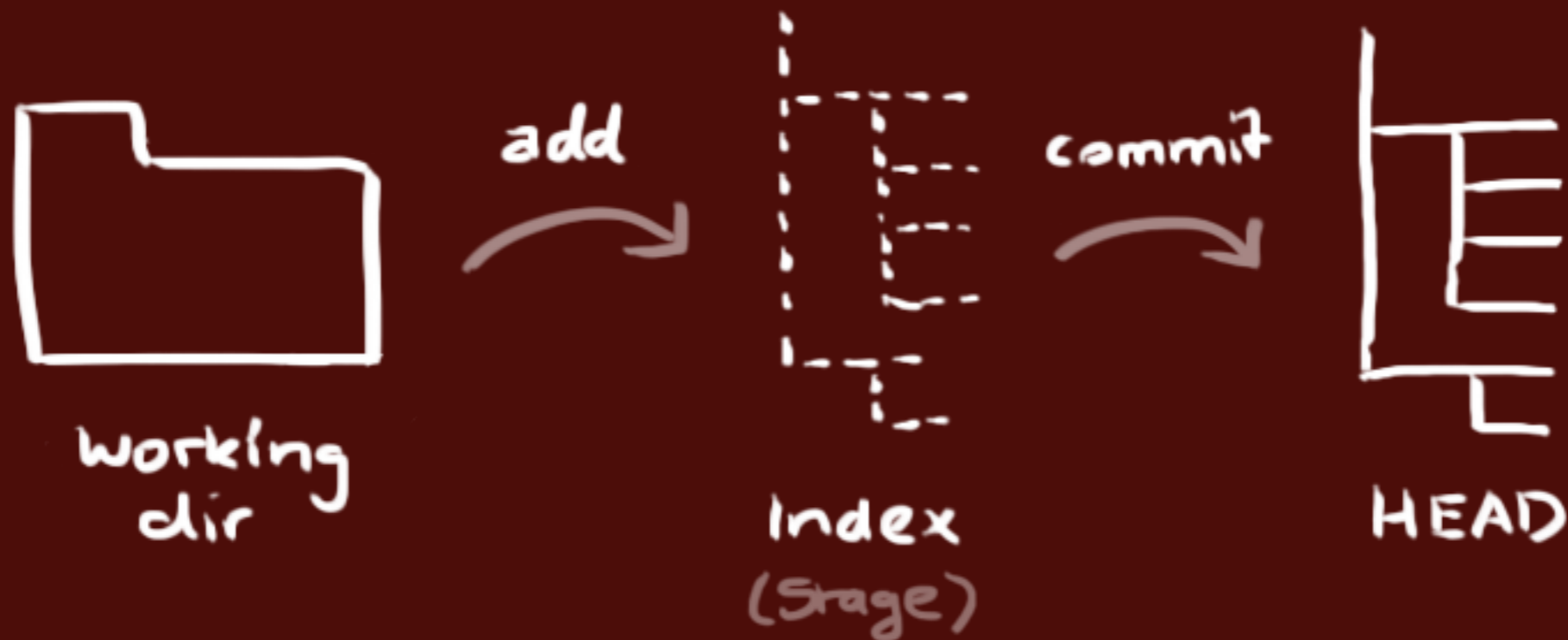
- sh
- bash
- dash
- Perl、Python、PHP、Ruby

Git

- 创建新仓库 `git init`
- 检出仓库 `git clone`

workflow

工作目录、暂存区 (Index) 、HEAD



添加和提交

添加到暂存区：

```
git add <filename>  
git add *
```

提交改动：

```
git commit -m "代码提交信息"
```

- 推送改动 git push
- 分支
- 更新、合并
- 标签
- 修改记录 git log

Linux用户协会

- 首页：<https://lug.ustc.edu.cn/>
- 活动室：西区图书馆206室
- 入门公开课：<https://ftp.ustclug.org/course/>